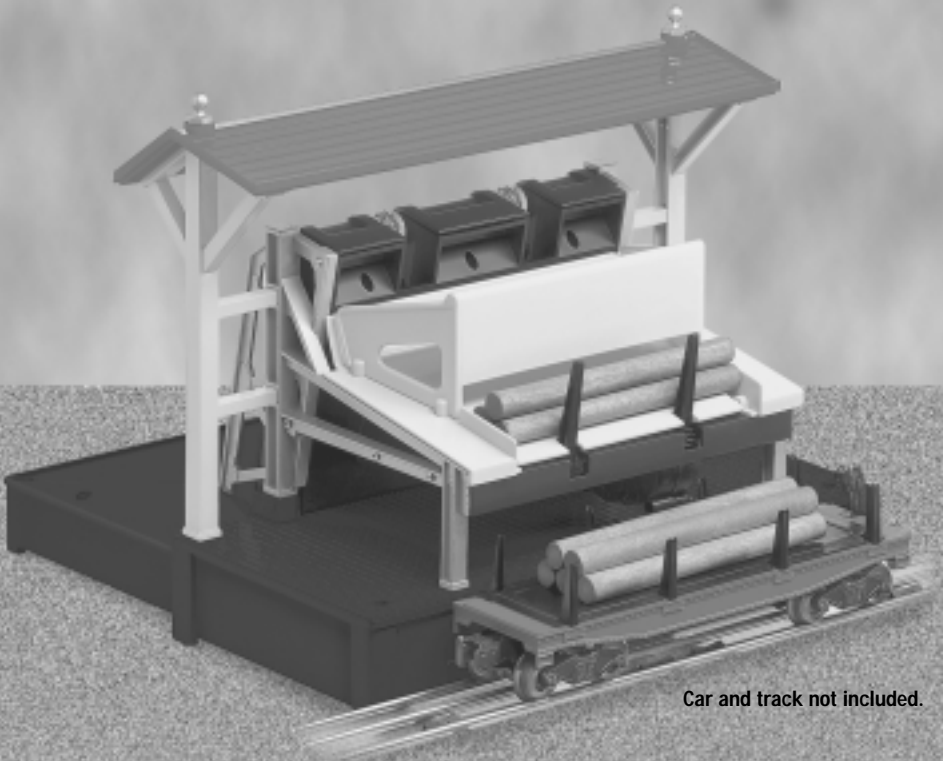


72-4115-250
10/04



Car and track not included.

***Lionel
AMC/ARC Log Loader
Owner's Manual***

Congratulations on your purchase of the Lionel AMC/ARC Log Loader! This accessory incorporates two of the most sophisticated TrainMaster Command Control components, the Accessory Motor Controller and the Action Recorder Controller, which are pre-installed for simple set-up.

In the Command Control environment, you control the chain drive, the stakes, and the lamps using your CAB-1 Remote Controller (available separately, 6-12868) and a Command Base (available separately, 6-12911). You are able to record and play back an entire animated sequence created with the Log Loader.

Table of contents

Placing the Log Loader on your layout	3
Connecting the power supply	4
Operating the Log Loader with the controller	5
Connecting the Log Loader for operation in the TrainMaster Command Control environment	6
Assigning an ID number to your Log Loader	7
Operating your Log Loader in the TrainMaster Command Control environment	8
Restoring the factory default settings	8
Making a simple recording with the Log Loader	9
Playing the recording	10
“Looping” the recording	10
Removing a loop	10
Resetting the Log Loader in the TrainMaster Command Control environment	11
CAB-1 Remote Controller commands	11
Limited Warranty/Lionel Service	12

The following Lionel marks may be used throughout this instruction manual and are protected under law. All rights reserved.

Lionel®, *TrainMaster®*, *Odyssey®*, *RailSounds®*, *CrewTalk™*, *TowerCom™*, *DynaChuff™*, *StationSounds™*, *Pullmor®*, *ElectroCoupler™*, *Magne-Traction®*, *CAB-1® Remote Controller*, *PowerMaster®*, *Lionel ZW®*, *ZW®*, *PowerHouse®*, *TMCC®*, *Lionelville™*, *Lockon®*, *Wireless Tether™*, *LionMaster®*, *American Flyer®*

The name FasTrack® is used with permission from Pitsco, Inc.

Placing the Log Loader on your layout

The Log Loader is designed for use with remote-control log dump cars (available separately). Position a log dump car over the magnetic disk on a remote-control track section (available separately, 6-65530 for O gauge, 6-65149 or 6-12746 for O-27 gauge, and 6-12020 for FasTrack layouts), and activate the track section to dump the logs into the log loader's bin. As illustrated in Figure 1, locate the Log Loader beside a remote-control track section. Another section of track should be placed on the opposite side for loading your cars.

Note! To operate the Remote-Control Track section with your CAB-1 Remote Controller, we recommend that TMCC Operating Track Controller (available separately, 6-14185).

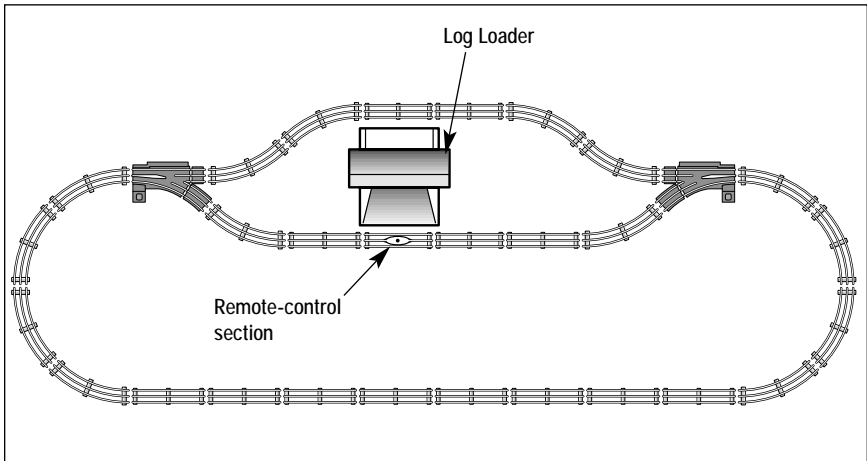


Figure 1. Track layout suggestion

Connecting the power supply

Your Log Loader was designed to operate at 16-18 volts (AC). The power supply terminals are located along the side of the controller. Refer to Figure 2. Please note that the ends of the wires must be stripped back 1/8" to 1/4".

Caution! Only an adult should perform this task. We recommend using a pair of wire strippers.

1. Attach one wire to the Power/A terminal on the power supply and connect it to the terminal labeled A on the underside of the controller.

Note! To make the controller connections, loosen the terminal locks using a small phillips-head screwdriver and insert the bare ends of the wires into the holes in the housing. Tighten the terminal locks to secure the connection.

2. Attach another wire to the Common/Ground/U terminal on the power supply and connect it to the terminal labeled U on the underside of the controller.

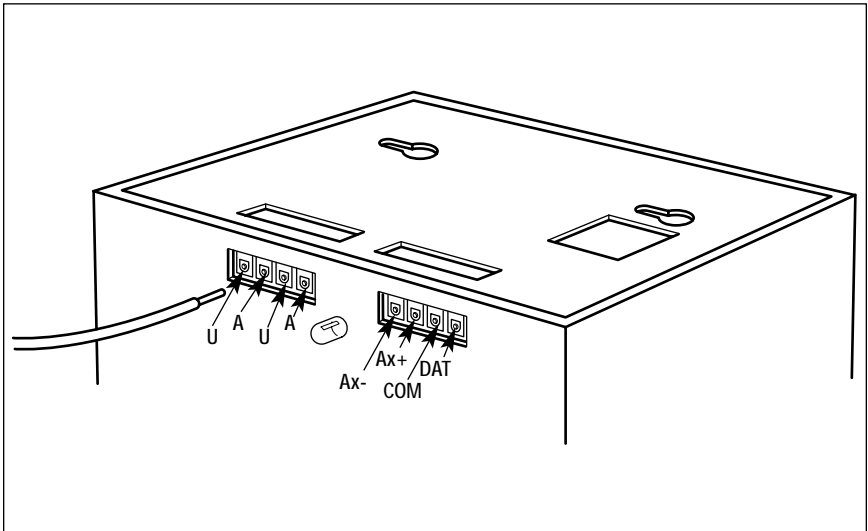


Figure 2. Power connections

Operating the Log Loader with the controller

The Log Loader has three different functions that can be operated using a controller lever. The controller levers are illustrated in Figure 3. The LED will illuminate each time you operate a lever.

- **Use the chain drive lever to activate the chain drive.** Push the lever forward to increase the speed. Pull the lever back to decrease the speed and turn off the drive.
- **Use the stake lever to operate the stakes.** Push the lever forward to lower the stakes. Pull the lever back to return the stakes to the upright position.
- **Use the light lever to turn the lights on and off and adjust the intensity.**

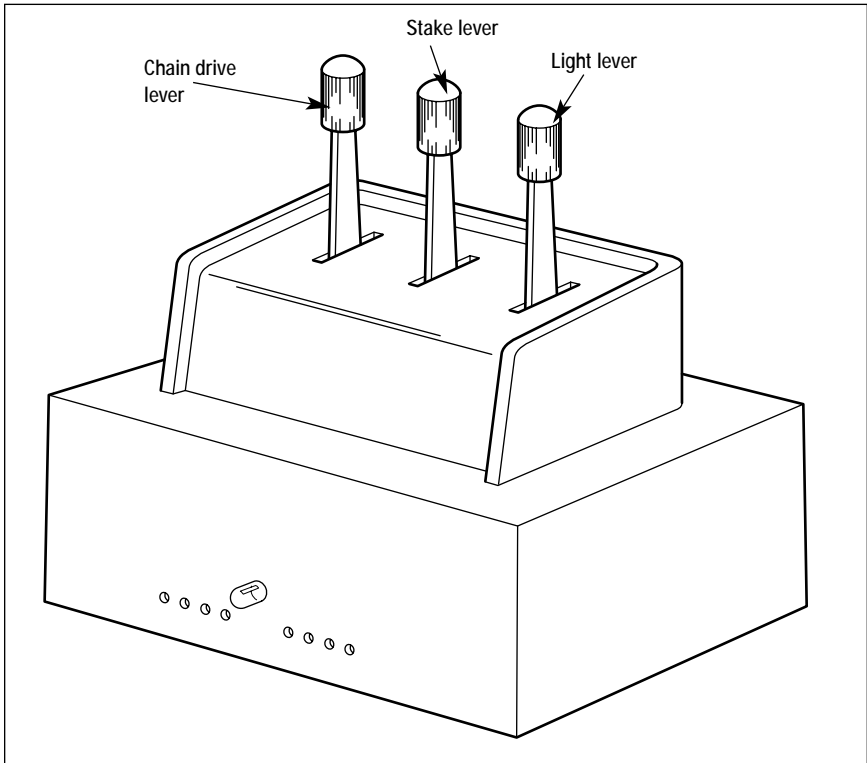


Figure 3. Controller levers

Connecting the Log Loader for operation in the TrainMaster Command Control environment

To operate the Log Loader using your CAB-1 Remote Controller (available separately, 6-12868), you must connect the Crane to the Command Base (available separately, 6-12911).

The Command Base will transmit your CAB-1 Remote Control commands to this accessory. If you have no other TMCC Controllers connected, you will need to wire the Log Loader to the Command Base using a Command Base Cable (available separately, 6-14191 or 6-14195). If you have other TMCC Controllers connected, you will need to “daisy chain” the Controllers, or wire them one after another, using a Controller to Controller Cable (available separately, 6-14193, 6-14196, or 6-14197). Refer to Figure 4.

- If you are using the Command Base Cable, simply plug the cable into the COMPUTER port on the Command Base. Connect the red wire to the DAT terminal on the Log Loader. Finally, connect the green wire to the COM terminal on the Log Loader.
- If you have other TMCC Controllers already connected to your Command Base, simply connect the DAT terminals with the red wire and the COM terminals with the green wire from the Controller to Controller Cable.

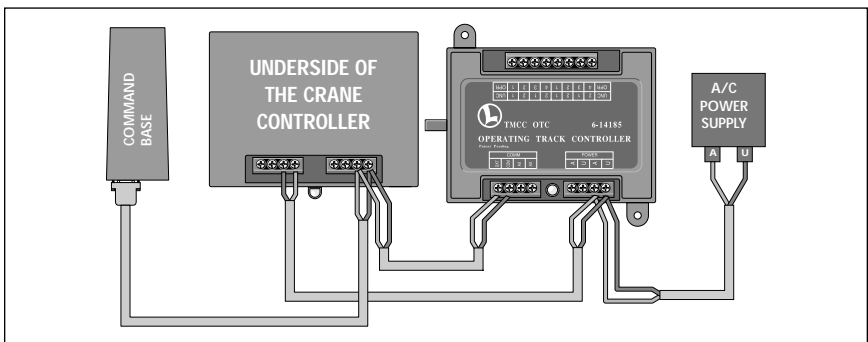


Figure 4. Daisy chain

Assigning an ID number to your Log Loader

Prepare your Log Loader for operation in the TrainMaster Command Control environment by assigning a unique engine (ENG) ID number to it. The Log Loader will only respond to commands that are intended for this ID number.

1. Using a needle nose pliers, remove the RUN/PROGRAM jumper from the bottom of the controller. Refer to Figure 5 for the location of the jumper.
2. Press the **ENG** button on your CAB-1 Remote Controller.
3. Select a unique ID number (0-99) and enter it with the CAB-1 Remote Controller's numeric keypad.
4. Press **SET** on your CAB-1 Remote Controller.
5. Replace the RUN/PROGRAM jumper from the underside of the controller.

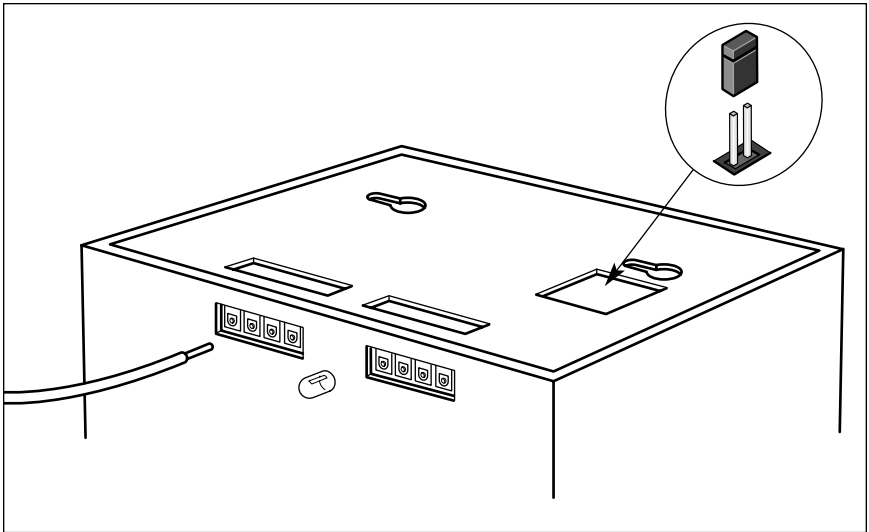


Figure 5. Jumper location

Operating your Log Loader in the TrainMaster Command Control environment

After you have connected the Log Loader to the Command Base and assigned it a unique ID number, you are ready to operate the accessory. Please note that the Log Loader will respond only while you are operating the controls.

Begin by addressing the Log Loader. Press **ENG** and enter the unique ID number assigned in the previous section.

- Operating the stakes using the red **THROTTLE KNOB** on your CAB-1 Remote Control. A clockwise rotation will lower the stakes. A counter-clockwise rotation will raise the stakes.
- Operate the chain drive using the **BRAKE** and **BOOST** buttons. **BOOST** turns on the drive. **BRAKE** turns off the drive.
- Turn the lights on and off and adjust the intensity using the **F** and **R** buttons.

Restoring the factory default settings

Follow these steps to reset the Log Loader to its factory defaults. The ID numbers and voltage settings will be reset.

Note! Your recording will not be cleared.

1. Remove the jumper from the underside of the controller. Refer to Figure 5 on page 7 for the location of the jumper.
2. Turn off power to the Log Loader.
3. Pull the three levers down towards the front of the controller.
4. While holding the three levers down, turn on power to the Log Loader. The LED flashes once.
5. Release the levers. At this point, the LED will flash.
6. Replace the jumper, and the Log Loader is reset.

Making a simple recording with the Log Loader

Follow these steps to create a simple recording with the Log Loader. As you use your CAB-1 Remote Controller to operate the Log Loader, the accessory will memorize each command.

After you press AUX1, 9, you have 45 seconds to create a recording.

Note! A CAB-1 Remote Controller and Command Base are required to make a recording.

Hint! Plan your recordings before you begin. Remember—the accessory will memorize every command, including the unintentional ones. If you make a mistake, just start over. You can always record over a program.

1. Remove the RUN/PROGRAM jumper from the bottom of the controller. Refer to Figure 5 on page 7 for the location of the jumper.
2. Press **ENG** and enter the Log Loader's ID number.

Note! When creating a recording, the LED will blink on for one second and off for one second.

3. Press **AUX1, 9** on the CAB-1 Remote Controller to start recording.
4. Operate the accessory.
5. Press **AUX1, 0** to end the recording.
6. Replace the jumper.

Playing the recording

Follow these steps to play your recording.

Hint! Always keep the starting point (the initial position of the Log Loader) and the input voltages the same. We recommend that you start with the Log Loader stopped. Before you play the recording, be sure to position the accessory where it was when you started to record for more consistent results.

1. Press **ENG** and enter the Log Loader's ID number.
2. Press **AUX2** on the CAB-1 Remote Controller to play the recording. Press **AUX2** again to pause the recording.
3. Press **AUX1, 0** to discontinue the recording at any time during playback.

"Looping" the recording

You may choose to have the recording "loop," or play repeatedly. Keep in mind that the loop command is not a part of the actual recording; therefore, this function can be turned on or off at any time. Follow these steps to create a loop after you have made the recording.

Note! Do not remove the jumper.

1. Press **ENG** and enter the Log Loader's ID number.
2. Press **AUX1, 8** on the numeric keypad.
3. Press **SET** on the CAB-1 Remote Controller.

Removing a loop

Because the looping function is not a part of the recording, you can remove it at any time without erasing your recording.

Note! Do not remove the jumper.

1. Press **ENG** and enter the Log Loader's ID number.
2. Press **AUX1, 7** on the numeric keypad.
3. Press **SET** on the CAB-1 Remote Controller.

Resetting the Log Loader in the TrainMaster Command Control environment

To reset your Log Loader in the TrainMaster Command Control environment, simply remove the run/program jumper, press **H** on the CAB-1 Remote Controller, and then replace the jumper. Alternately, you may follow the conventional reset procedure as discussed on page 6.

CAB-1 Remote Controller commands



Operates the stakes.



Turns off the chain drive.



Turns on the chain drive.



Turns on the lights.



Turns off the lights.



Activates the keypad.



Removes a loop.



Loops a recording.



Starts recording.



Discontinues playback. Any functions in operation will continue to operate. Use the CAB-1 Remote Controller or the controller to turn off the specific function.



Plays the recording. Pauses playback. Any functions in operation will continue to operate. Use the CAB-1 Remote Controller or the controller to turn off the specific function.



Limited Warranty/Lionel Service

This Lionel product, including all mechanical and electrical components, moving parts, motors and structural components, except for light bulbs, is warranted to the original consumer-purchaser, for **one year** against original defects in materials or workmanship when purchased through an authorized Lionel merchant.

This warranty does NOT cover normal wear and tear, light bulbs, defects appearing in the course of commercial use, or damage resulting from abuse or misuse of the product by the purchaser. Transfer of this product by the original consumer-purchaser to another person voids this warranty. Modification of this product voids this warranty.

Any warranted product which is defective in original materials or workmanship and is delivered by the original consumer-purchaser to Lionel L.L.C. or an authorized Lionel L.L.C. Service Center, together with proof of original purchase will, at the option of Lionel L.L.C., be repaired or replaced, without charge for parts or labor. In the event the defective product cannot be repaired, and a replacement is not available, a refund of the original purchase price will be granted. Any products on which warranty service is sought must be sent freight or postage prepaid, as transportation and shipping charges are not covered by the warranty.

In no event shall Lionel L.L.C. be liable for incidental or consequential damages.

Some states do not allow the exclusion or limitation of incidental or consequential damages, so the above exclusion may not apply to you.

This limited warranty gives you specific legal rights, and you may have other rights which vary from state to state.

Instructions for Obtaining Service

If service for this Lionel L.L.C. product is required, bring the item, along with your dated sales receipt and completed warranty information to the nearest Authorized Lionel Service Center. Your nearest Lionel Service Center can be found by calling 1-800-4-Lionel, or by accessing our Website at www.lionel.com.

If you prefer to send your product back to Lionel L.L.C. for repair in Michigan, you must first call 586-949-4100 or FAX 586-949-5429, or write to Customer Service, P.O. Box 748, New Baltimore, MI 48047-0748, stating what the item is, when it was purchased and what seems to be the problem. You will be sent a return authorization letter and label to ensure your merchandise will be properly handled upon receipt.

Once you have received your return authorization and label, make sure that the item is packed to prevent damage during shipping and handling. We suggest that you use the product's original packaging. This shipment must be prepaid and we recommend that it be insured.

Please make sure you have followed all of the above instructions carefully before returning any merchandise for service. You may choose to have your product repaired by one of our Authorized Lionel Service Centers after its warranty has expired. A reasonable service fee will be charged.

Warranty Information

Please complete the information below and keep it, along with your dated sales receipt. You must present this and your dated sales receipt when requesting warranty service.

Name _____

Address _____

Place of Purchase _____

Date of Purchase _____

Product Number _____

Product Description _____



©2005 LIONEL L.L.C., CHESTERFIELD, MI 48051-2493
UNITED STATES OF AMERICA
PRINTED IN U.S.A.